



# MORECAMBE



FLOTATION ENERGY

## Morecambe Offshore Windfarm: Generation Assets Environmental Statement

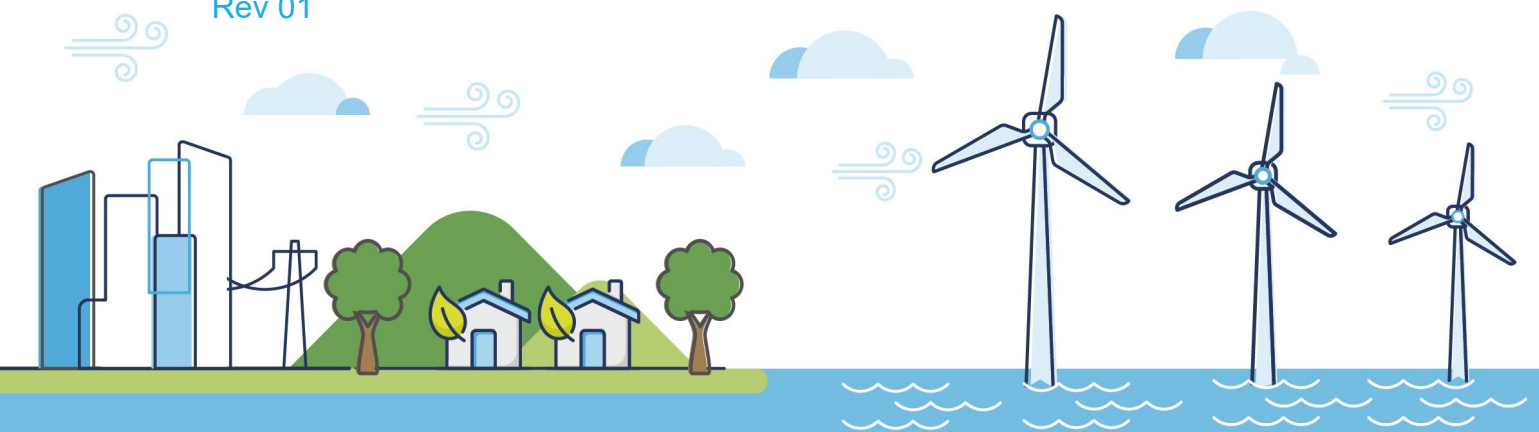
### Volume 5

### Chapter 18 SLVIA Figures (Part 7 of 34)

PINS Document Reference: 5.3.18.7

APFP Regulation: 5(2)(a)

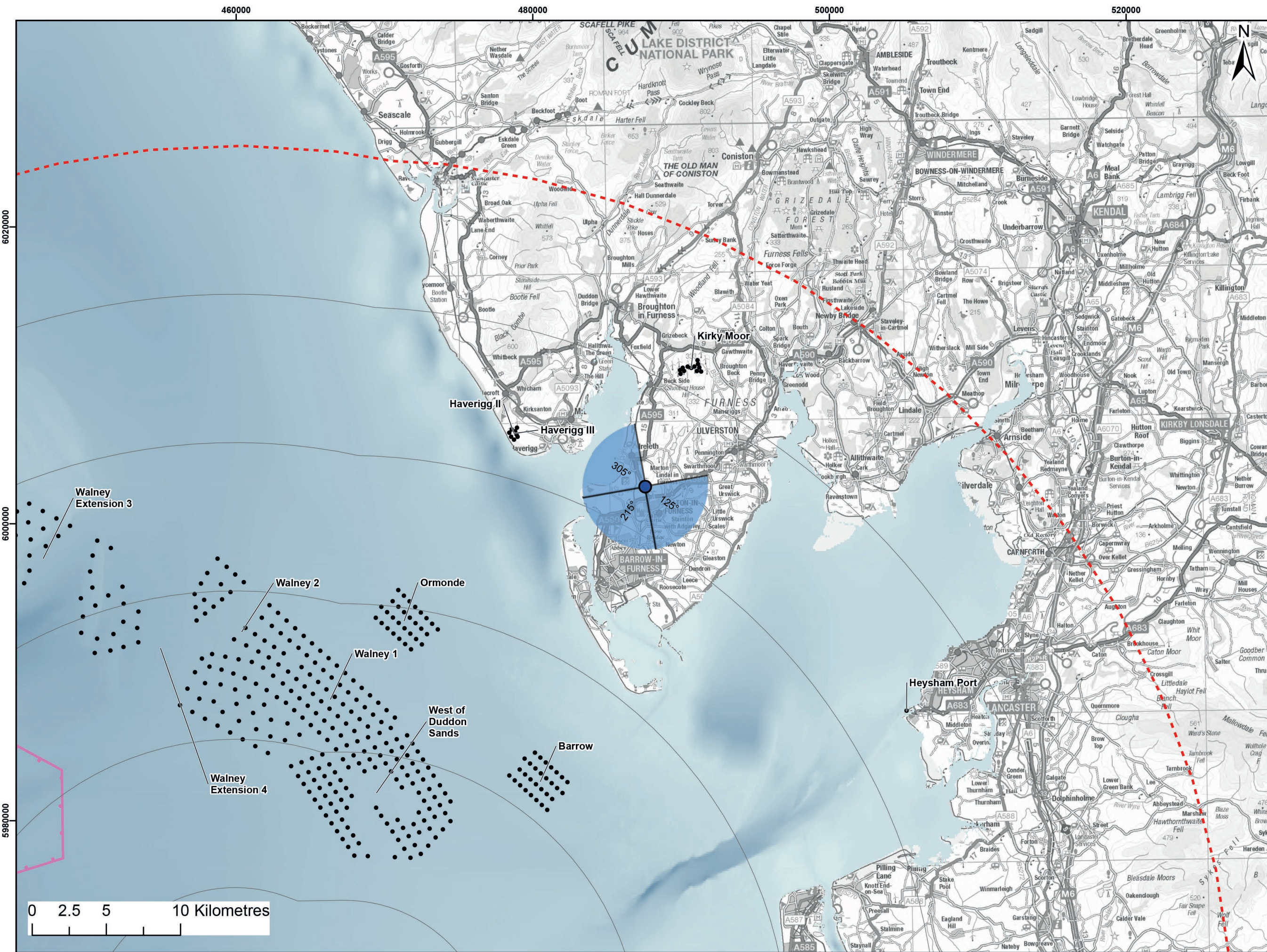
Rev 01



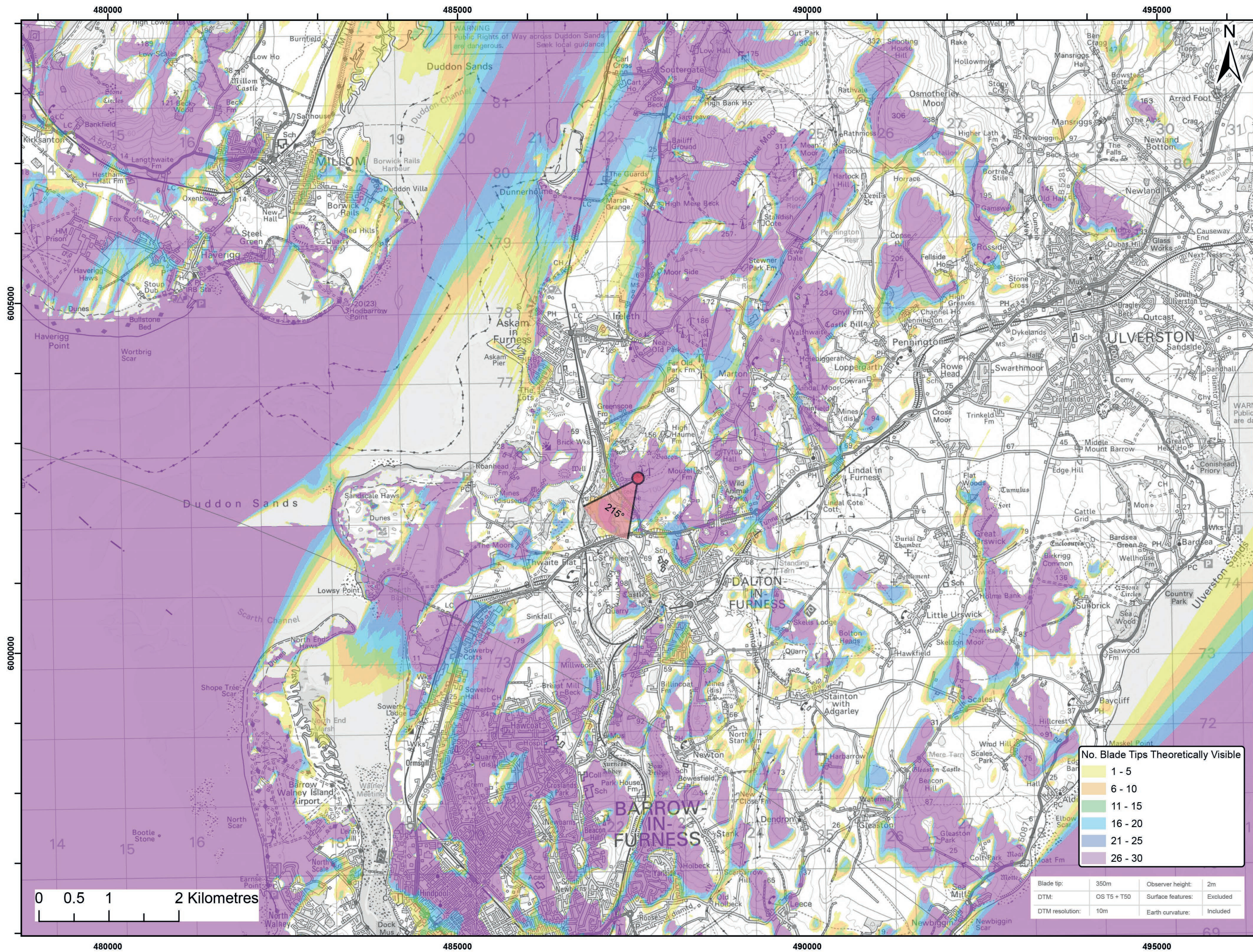
## Document History

<b>Doc No</b>	MOR001-FLO-CON-ENV-FIG-1180	<b>Rev</b>	01
<b>Alt Doc No</b>	PC1165-RHD-ES-XX-DG-Z-0018		
<b>Document Status</b>	Approved for Use	<b>Doc Date</b>	May 2024
<b>PINS Doc Ref</b>	5.3.18.7	<b>APFP Ref</b>	5(2)(a)

<b>Rev</b>	<b>Date</b>	<b>Doc Status</b>	<b>Originator</b>	<b>Reviewer</b>	<b>Approver</b>	<b>Modifications</b>
01	May 2024	Approved for Use	Royal HaskoningDHV	Morecambe Offshore Windfarm Ltd	Morecambe Offshore Windfarm Ltd	n/a



Viewpoint Location Plan Baseline Panorama (90 Degree View)  
Scale: 1:200,000



Viewpoint Location Plan (53.5 Degree View)  
Scale: 1:50,000



- Legend:
- Morecambe Offshore Wind Farm Status
  - - Assumed WTG locations (30 x BT 310m(HAT))
  - 90 Degree Field of View
  - 53.5 Degree Field of View
  - 10km Radii
  - 60km Study Area
  - Morecambe Offshore Windfarm Site
  - Cumulative Wind Farms Status
  - Operational
  - Under Construction
  - Consented
  - Application
  - Scoping
  - Pre-Application

© Crown copyright and database rights (2023) Ordnance Survey 0100031673.

Report:  
Morecambe Offshore Windfarm: Generation Assets  
Environmental Statement

Title:  
Viewpoint 4:  
High Haume Farm (Dalton-in-Furness)

Figure: 18.27a | Drawing No: 211609

Revision:	Date:	Drawn:	Checked:	Size:	Scale:
P02	25/09/2023	RA	SM	A3	1:50,000

Co-ordinate system: WGS 1984 UTM Zone 30N

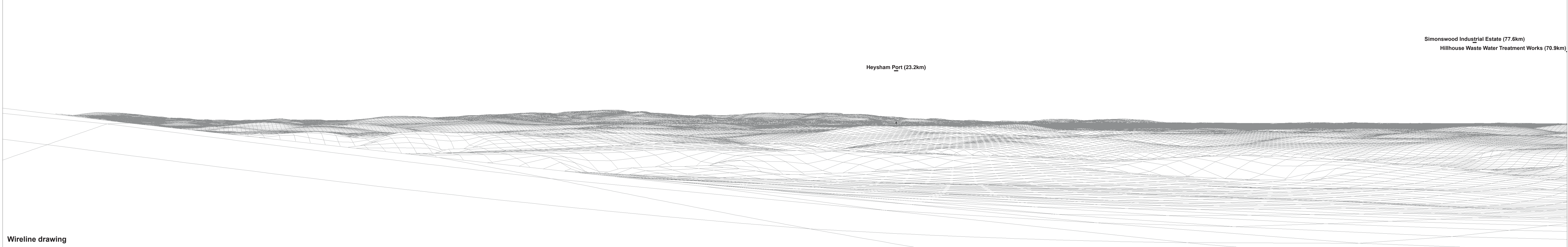


No. Blade Tips Theoretically Visible

1 - 5
6 - 10
11 - 15
16 - 20
21 - 25
26 - 30

Blade tip:	350m	Observer height:	2m
DTM:	OS TS + 150	Surface features:	Excluded
DTM resolution:	10m	Earth curvature:	Included



OS reference: 322397 E 475617 N  
 Eye level: 120.65 m AOD  
 Direction of view: 125°  
 Nearest turbine: 43.254 km

Horizontal field of view: 90° (cylindrical projection)  
 Principal distance: 522 mm

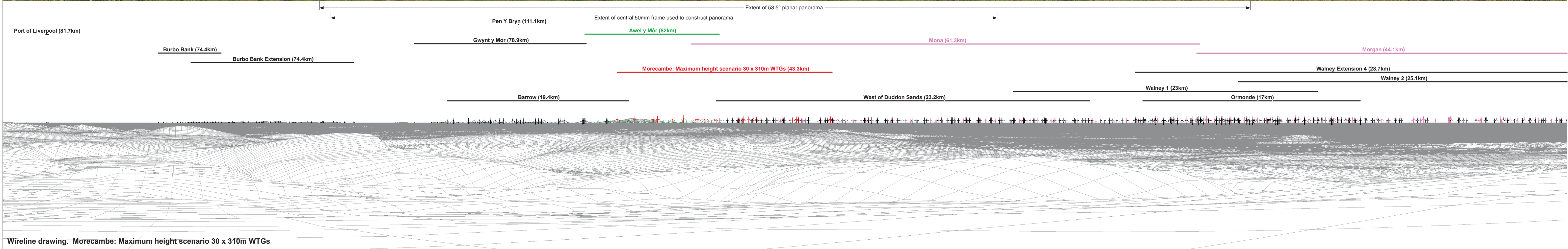
Camera: Canon EOS 6D  
 Lens: EF50mm f/1.4 USM  
 Camera height: 1.5 m AGL  
 Date and time: 22/06/2022, 19:20

Figure: 18:27b  
 Viewpoint 4: High Haume Farm (Dalton-in-Furness)



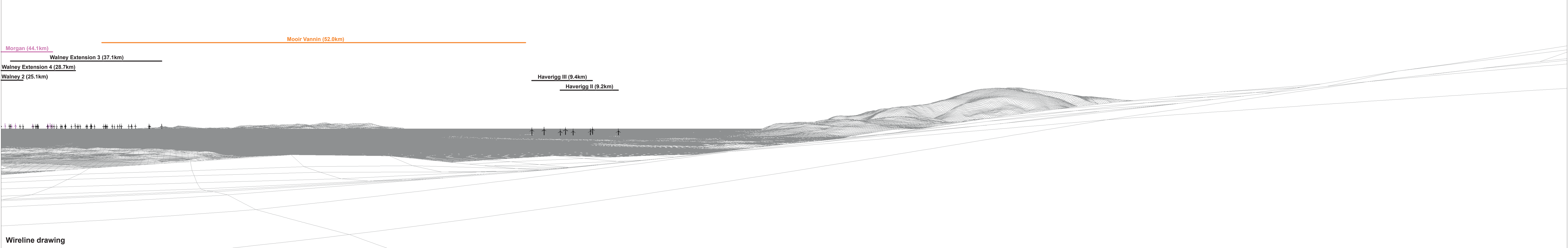
Baseline photograph

This image provides landscape and visual context only



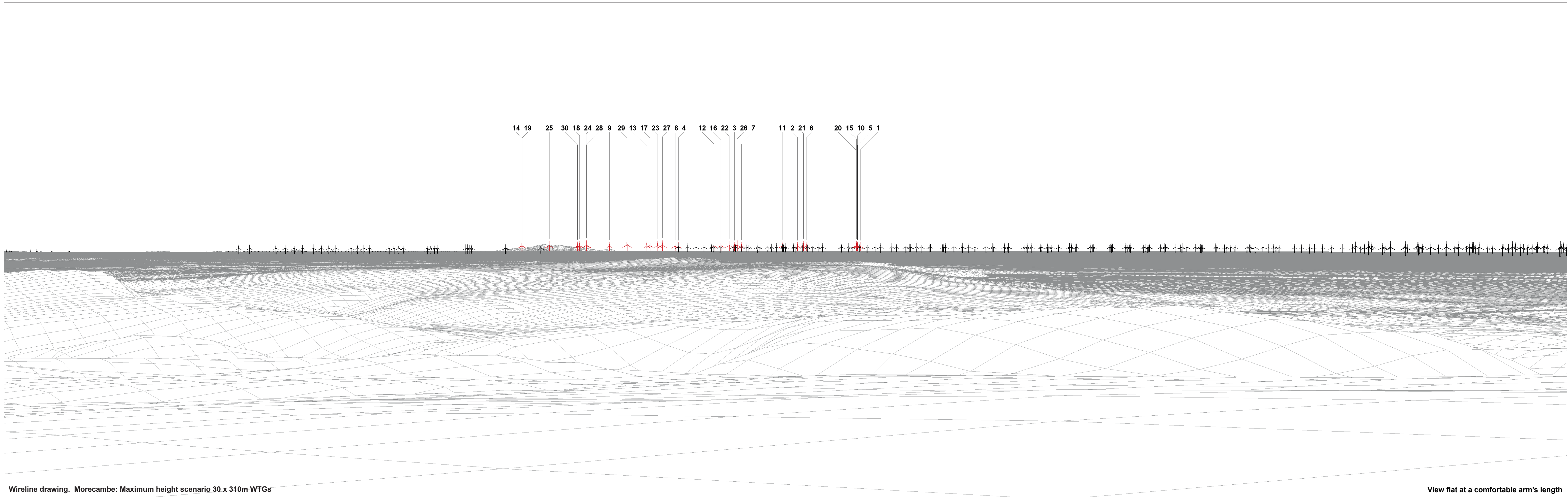
OS reference:	322397 E 475617 N	Horizontal field of view:	90° (cylindrical projection)	Camera:	Canon EOS 6D
Eye level:	120.65 m AOD	Principal distance:	522 mm	Lens:	EF50mm f/1.4 USM
Direction of view:	215°			Camera height:	1.5 m AGL
Nearest turbine:	43.254 km			Date and time:	22/06/2022, 19:20

Figure: 18:27c  
Viewpoint 4: High Haume Farm (Dalton-in-Furness)



<b>OS reference:</b>	322397 E 475617 N	<b>Horizontal field of view:</b>	90° (cylindrical projection)	<b>Camera:</b>	Canon EOS 6D
<b>Eye level:</b>	120.65 m AOD	<b>Principal distance</b>	522 mm	<b>Lens:</b>	EF50mm f/1.4 USM
<b>Direction of view:</b>	305°			<b>Camera height:</b>	1.5 m AGL
<b>Nearest turbine:</b>	43.254 km			<b>Date and time:</b>	22/06/2022, 19:20

**Figure: 18:27d**  
**Viewpoint 4: High Haume Farm (Dalton-in-Furness)**



Wireline drawing. Morecambe: Maximum height scenario 30 x 310m WTGs

View flat at a comfortable arm's length

<b>OS reference:</b>	322397 E 475617 N	<b>Horizontal field of view:</b>	53.5° (planar projection)	<b>Camera:</b>	Canon EOS 6D
<b>Eye level:</b>	120.65 m AOD	<b>Principal distance:</b>	812.5 mm	<b>Lens:</b>	EF50mm f/1.4 USM
<b>Direction of view:</b>	215°	<b>Paper size:</b>	841 x 297 mm (half A1)	<b>Camera height:</b>	1.5 m AGL
<b>Nearest turbine:</b>	43.254 km	<b>Correct printed image size:</b>	820 x 260 mm	<b>Date and time:</b>	22/06/2022, 19:20

**Figure: 18:27e**  
**Viewpoint 4: High Haume Farm (Dalton-in-Furness)**



Baseline Photograph (offshore operational turbines have been rendered in this view)

View flat at a comfortable arm's length

<b>OS reference:</b>	322397 E 475617 N	<b>Horizontal field of view:</b>	53.5° (planar projection)	<b>Camera:</b>	Canon EOS 6D
<b>Eye level:</b>	120.65 m AOD	<b>Principal distance:</b>	812.5 mm	<b>Lens:</b>	EF50mm f/1.4 USM
<b>Direction of view:</b>	215°	<b>Paper size:</b>	841 x 297 mm (half A1)	<b>Camera height:</b>	1.5 m AGL
<b>Nearest turbine:</b>	43.254 km	<b>Correct printed image size:</b>	820 x 260 mm	<b>Date and time:</b>	22/06/2022, 19:20

**Figure: 18:27f**  
**Viewpoint 4: High Haume Farm (Dalton-in-Furness)**





Photomontage

View flat at a comfortable arm's length

<b>OS reference:</b> 322397 E 475617 N	<b>Horizontal field of view:</b> 53.5° (planar projection)	<b>Camera:</b> Canon EOS 6D	
<b>Eye level:</b> 120.65 m AOD	<b>Principal distance:</b> 812.5 mm	<b>Lens:</b> EF50mm f/1.4 USM	
<b>Direction of view:</b> 215°	<b>Paper size:</b> 841 x 297 mm (half A1)	<b>Camera height:</b> 1.5 m AGL	
<b>Nearest turbine:</b> 43.254 km	<b>Correct printed image size:</b> 820 x 260 mm	<b>Date and time:</b> 22/06/2022, 19:20	<b>Figure: 18:27g</b> <b>Viewpoint 4: High Haume Farm (Dalton-in-Furness)</b>